

# Skin lesions to watch for in transplant patients on immunosuppressants

## 1. Solar Keratoses

Rough scaly spots on sun-damaged skin.



## 2. Basal Cell Carcinoma

Small raised growths often with smooth edges and prominent blood vessels. There may be a central ulcer and bleeding.



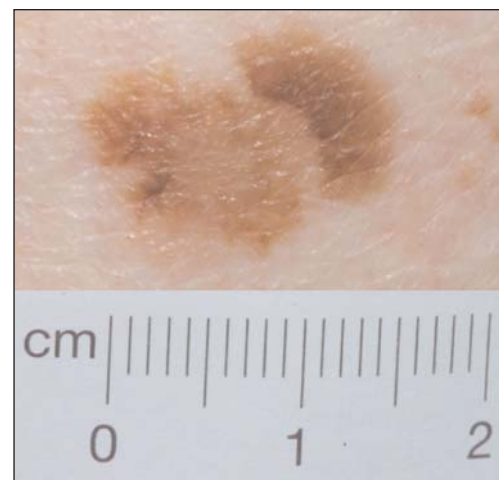
## 3. Squamous Cell Carcinoma

More common than basal cell carcinoma in transplant patients, can look very similar. Tend to bleed more and can be sore.



## 4. Melanoma

Usually pigmented. Watch for moles (new or old) that increase in size, change shape and colour or bleed.



Often these lesions are painless and can therefore be overlooked. Regular observation of the skin by patient, relative and nurse can help early detection and treatment.