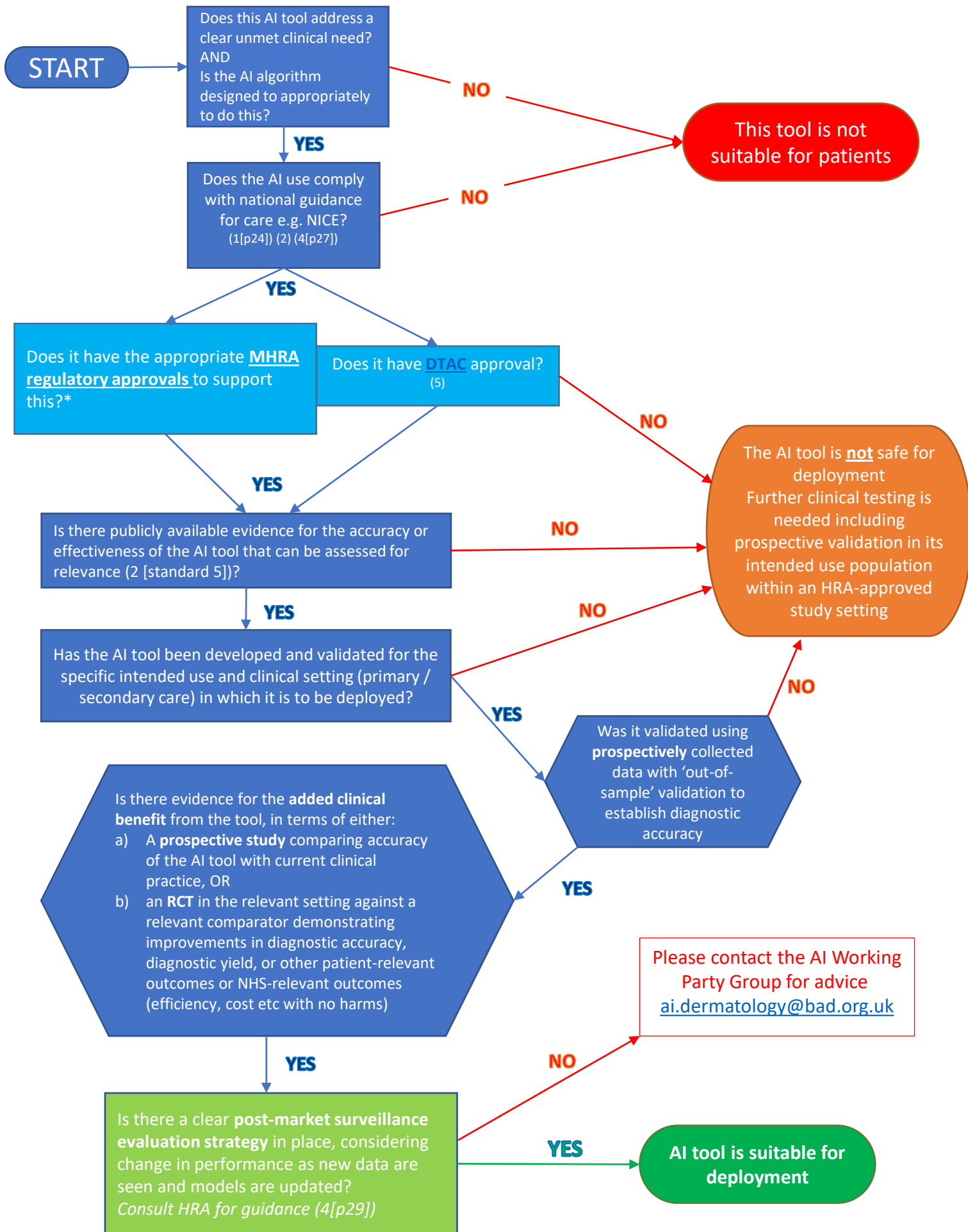


FLOWCHART TO DETERMINE IF AN ARTIFICIAL INTELLIGENCE (AI) TOOL IS APPROPRIATE FOR CLINICAL DEPLOYMENT IN DERMATOLOGY



*e.g., currently we recommend CE class 2a for diagnostic / triage tools (see BAD Position Statement July 2021)

Evidence List:

1. NICE Evidence standards framework for digital health technologies
<https://www.nice.org.uk/corporate/ecd7/resources/evidence-standards-framework-for-digital-health-technologies-pdf-1124017457605>
2. NHS digital, data and technology standards framework <https://digital.nhs.uk/about-nhs-digital/our-work/nhs-digital-data-and-technology-standards/framework>
3. NHS A Buyer's Guide to AI in Health and Care
https://www.nhsx.nhs.uk/media/documents/NHSX_A_Buyers_Guide_to_AI_in_Health_and_Care_KVjMIWP.pdf
4. MHRA Medical device stand-alone software including apps (including IVDMDs)
https://assets.publishing.service.gov.uk/government/uploads/system/uploads/attachment_data/file/548090/Medical_device_stand-alone_software_including_apps.pdf
5. DTAC <https://www.nhsx.nhs.uk/key-tools-and-info/digital-technology-assessment-criteria-dtac/>